



EC Joint Research Centre support to the New Leipzig Charter

EUROPE'S CITIES FIT FOR FUTURE

JRC.B.3 Territorial Development Unit

Claudia Baranzelli

3rd September 2020

JRC scientific support to the Leipzig Charter

Knowledge Centre for Territorial Policies (JRC – DG REGIO)

- Evidence base, scenario modelling, hosting of platforms

Community of Practice on Cities (COP-CITIES)

- Open network for information exchange, discussion & best-practices
- First collaborative project Future of Cities report 2019
- COVID-19 perspective

...towards an **Urban Observatory**



The Just City



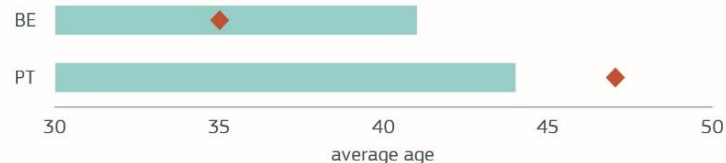
Cities need to be **more accesible and inclusive to all ages**



By 2070, a European citizen will live 8 years longer. This ageing population will require adaptations, especially in spatial infrastructure

Frequently, **people living in the capital are younger**, but this is not always the case...

In **Brussels**, people are on average 6 years younger than in the rest of Belgium



In **Lisbon**, people are on average 3 years older than in the rest of Portugal

Challenges:

- **Social segregation**
- **Health disparities**
- **Ageing**
- **Affordable housing**



Almost half of all buildings in Europe are **over 70 years old**



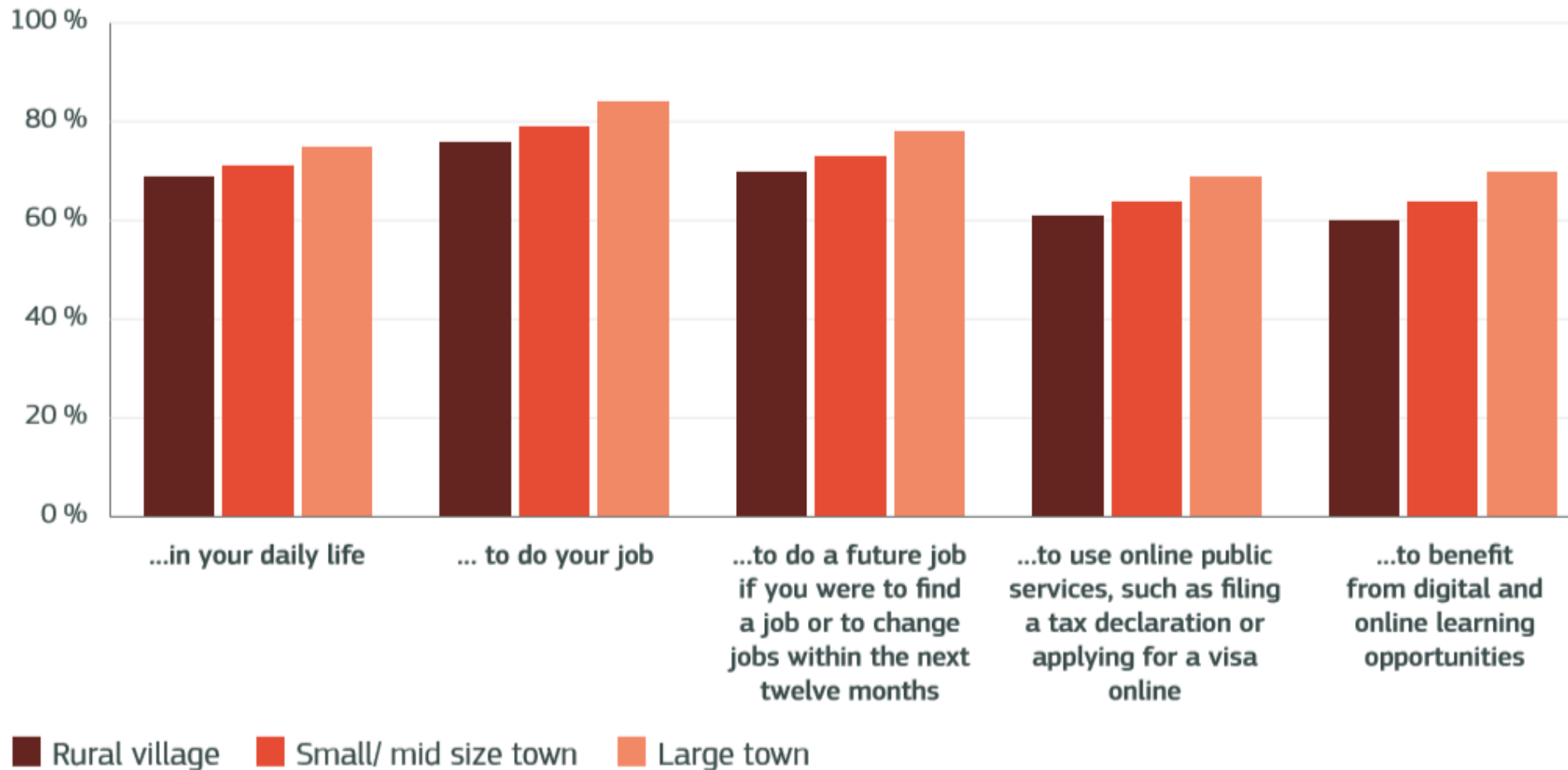
Optimising public space is crucial to increase sustainability and quality of life in cities.

The Just City

- **CiTown project on affordable housing (citylab in the CoP-CITIES)**
- **New project on migrants**
- **Exploring homelessness in cities**
- **EC Green paper on ageing**
- **Brief on Shrinking Cities**



The Productive City



Challenges:

- Supporting innovation & creativity
- Appropriate use of technology
- Changing nature of work

The Productive City

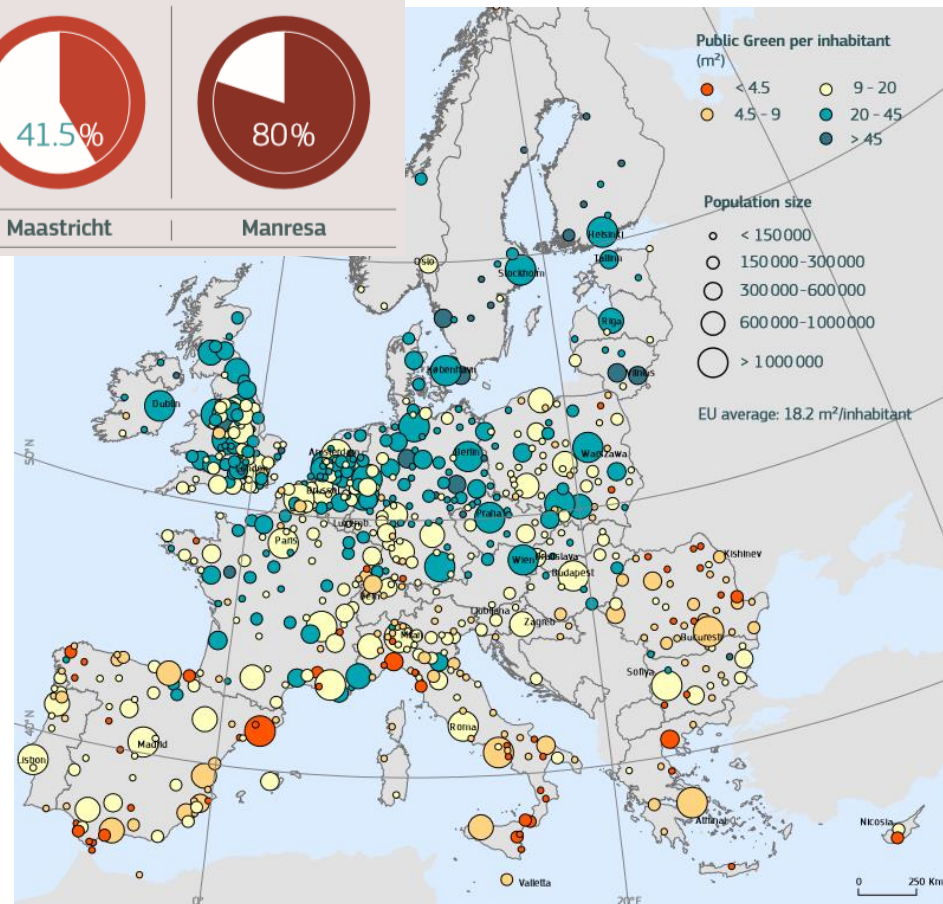
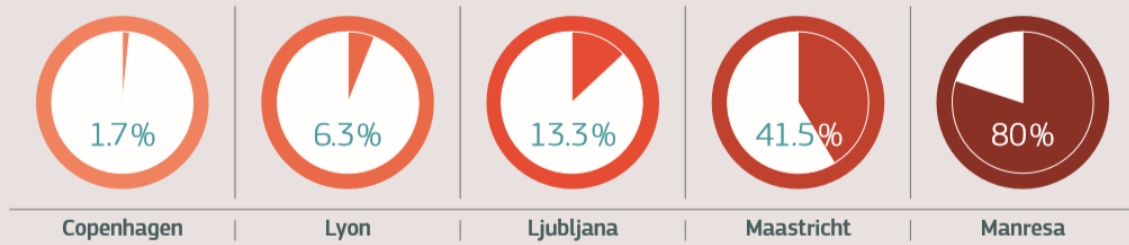
- Brief 'Cities fit for the digital age'
- Urban food systems brief (importance of local food production)
- Mixed-use neighbourhoods brief
- Tourism&Cities (from shock to recovery)



The Green City



The Water Exploitation Index (WEI), the ratio of water demand to the available freshwater resources, is a good indicator of water stress:

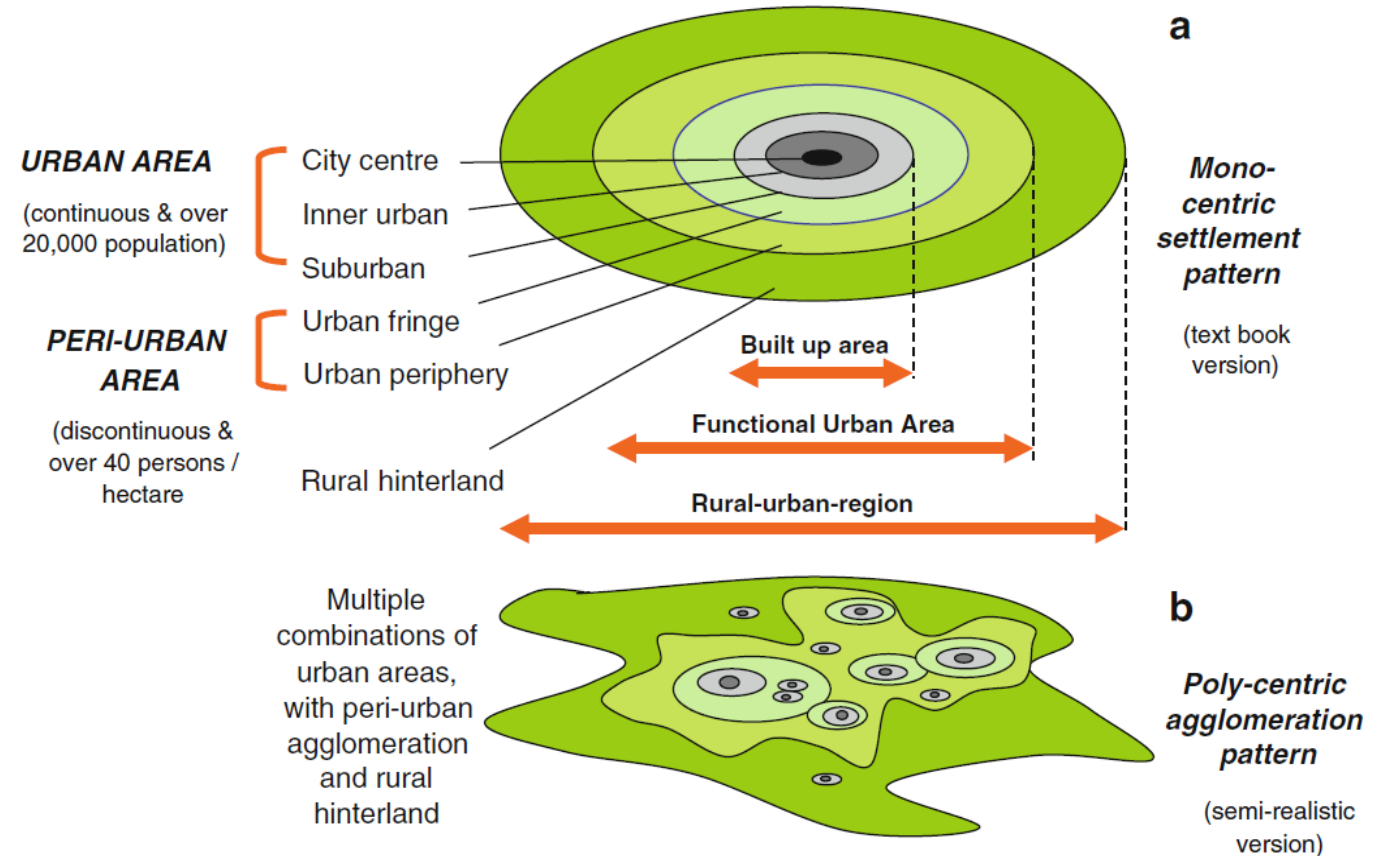


Challenges:

- Use of public & green spaces
- Climate change
- Urban/rural interface
- Mobility
- Building stock renewal

The Green City

- Urban-rural interactions brief
- Brief on circular economy



Next steps

Building the **Urban Observatory**:

- Systematic publication of Briefs by CoP-Cities/KC-TP
- Consolidation of Urban Data Platform +
- Data and knowledge exchange with and for cities
- Training and peer-learning activities
- City-labs as dedicated pilots
- Scaling-up of urban solutions

Thank you

Join the **Community of Practice on Cities (CoP-CITIES)**:

https://ec.europa.eu/knowledge4policy/territorial/topic/urban_en#CoP_CITIES

Use the **Knowledge Centre for Territorial Policies**:

https://ec.europa.eu/knowledge4policy/territorial_en