

# Cities' Future Challenges and How to Address Them

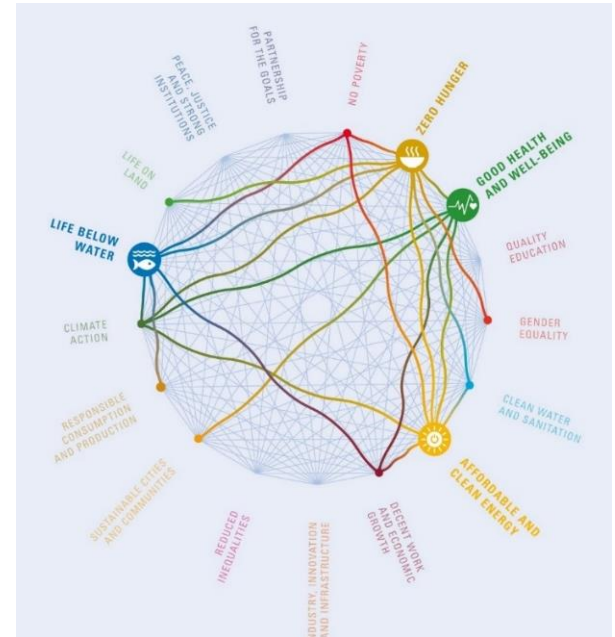
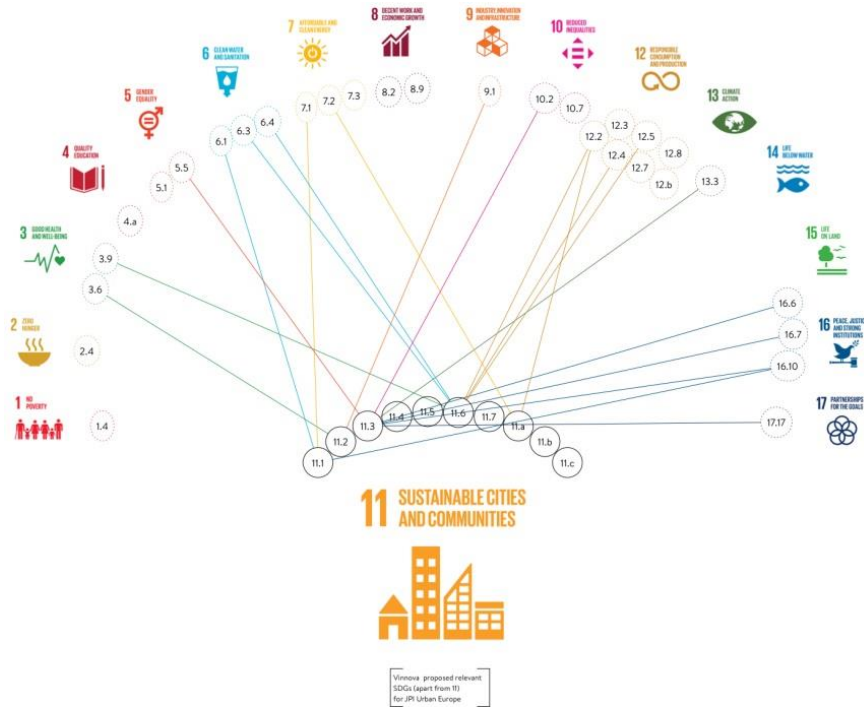
**Margit Noll**

JPI Urban Europe

[margit.noll@jpi-urbaneurope.eu](mailto:margit.noll@jpi-urbaneurope.eu)



# Complex Urban Challenges Require Integrated Policy Implementation



Source: International Science Council: SDGs Guide to Interactions, 2018

## Dilemmas as Innovation Drivers for Just, Green AND Productive Cities

How can city authorities exploit the potential of digitalisation for urban planning and governance while avoiding the risks of new inequalities and exclusion as well as addressing the consequences for jobs, value chains and privacy?



How can city authorities answer the demand for densification and infrastructure provision under the constraints of scarce resources, financial limitations, accessibility and affordability for all?



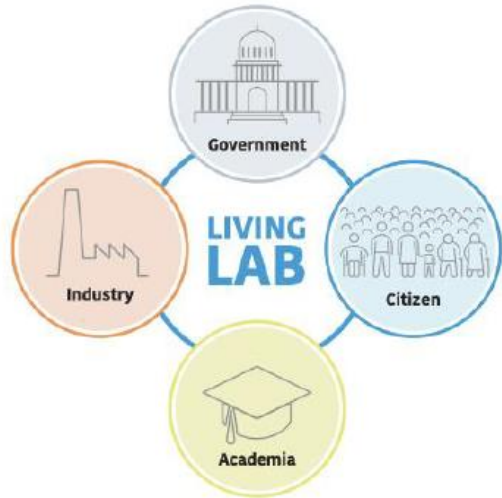
How can city authorities get prepared for unexpected, non-linear events and at the same time ensure highest liveability for its inhabitants?



How can city authorities provide multi-functional public spaces that serve the purposes of all groups of society within the given ownership situations, stakeholder interests, security concerns or densification needs?



# Stepping up the Game – Taking Co-design and Experimentation to the Next Level



**Quadruple helix model:** The Living Lab approach manages and contributes to local and transnational ecosystems and interdisciplinary teams which foster inclusion within urban and regional context. (European Network of Living Labs)

**Urban Living Labs are ...**

*...a form of experimental governance, whereby urban stakeholders develop and test new technologies, products, services and ways of living to produce innovative solutions ...<sup>1</sup>*

*... user-centred, open innovation ecosystems based on systematic co-creation integrating research and innovation in real life communities and settings<sup>2</sup>*

- Equity and inclusiveness
- Integration in local and regional 'proper' governance
- Capacity building in public administrations and society
- Community and neighbourhood level

<sup>1</sup> <https://www.slideshare.net/openlivinglabs/cities-as-living-labs-and-large-scale-experimentations>

<sup>2</sup> European Network of Living Labs ENoLL, <https://enoll.org>

# Evidence-based Policy Making Supported by Challenge-driven Research & Innovation

The New Leipzig Charter  
The transformative power of cities  
for the common good



Policy

specification of needs for research and innovation, new forms of governance, regulatory frameworks

experimentation and co-development of new approaches, capacity building, good practice



<https://jpi-urbaneurope.eu/project/interethnic-coexistence-in-european-cities/>

JPI Urban Europe project, Smart Urban Isle, <https://jpi-urbaneurope.eu/project/smart-urban-isle/>

JPI UE project: me<sup>2</sup>, <https://jpi-urbaneurope.eu/project/me2/>

Research and Innovation



# Stay connected, get engaged!



@JPIUrbanEurope



JPIUrbanEurope



JPIUrbanEurope

[jpi-urbaneurope.eu](http://jpi-urbaneurope.eu)